

The awning preferred by campers!



More shade and less weight with the Fiammastor®
Trust Fiamma, we invented the case awning for motorhomes and caravans.

With the Fiammastor® awning you can double the living space of your vehicle in less than one minute. It offers a cool and covered open space outside and lowers temperature inside. The Fiammastor® allows you to keep windows and doors open for air circulation during rainy weather. Wet gear can be taken off outside in order to avoid bringing dirt inside the vehicle. Fiamma awnings are the most elegant, userfriendly and trustworthy awnings on the market today.

The First Choice for your Motorhome, Caravan and Minivan.
The only awning that can be enhanced by a complete range of front and side panels.



	F45i F1	F45i L F1 L	ZIP	F65	Eagle	Caravanstore	Caravanstore ZIP	F35 PRO F35 PRO L	35 ZIP
Max. length cm.	406	556	456	490	450	440	440	300	360
Max. extension cm	250	250	250	250	250	225	225	225	225
Min weight kg	18	35	31,5	18,5	15	5,4	22,4	6	26,1
Max weight kg	26	48,5	51	39,3	35	10,7	34,5	10,5	28,8
Wall installation	●	●	●			●	●	●	●
Roof installation				●	●				
Installation kit	●	●	●						
Opening winch	●	●	●	●	●				
Joint arms	●	●	●	●	●				
Manual opening						●	●	●	●
Motorising	●	●	●	●	●				
Support legs	●	●	●	●		●	●	●	●
Wall fixing kit	●	●	●	●		●	●	●	●
Dual Shock-Absorber®	●	●	●	●					
Presto Fix®	●	●	●	●	●				
Syncro 3®	●	●	●	●	●				
Dual Security®	●	●	●						
Privacy®	●	●	●	●		●	●		●
Side W	●	●		●		●		●	
Side W Pro	●	●		●		●		●	
Blocker Pro	●	●		●		●		●	

● Standard ● Optional

An awning with exclusive features and superior style



DUAL SHOCK-ABSORBER®

Only Fiammastor® has the Dual Shock-Absorber®

The Dual Shock-Absorber® protects both the awning and the vehicle during bad weather*.

* Please follow the instructions carefully

DUAL SHOCK-ABSORBER
PATENT PENDING

European Patent 0 752 507



PRESTO FIX®

Perfect closing every time

The Fiammastor® is the only awning with a new adjusting system that enables you to gauge the closing of the front bar if, over a period of time, one side should stop closing perfectly.



German Patent: 103 00 312.6



The Fiammastor® is built using the latest technology, at our factory in Cardano al Campo, Italy



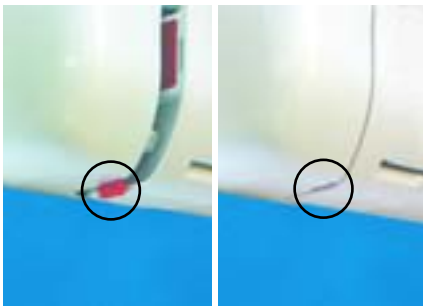
AUTO-LOCK®

Smooth and silent opening

Fiamma manufactures the only awning with a silent opening thanks to the TÜV certified Auto-Lock® self-locking winch safety system, with exclusive Syncro 3 long life Aluminium mechanical parts. The system facilitates easy and quick opening of the awning.



European Patent 0 694 439
German Utility Model 200 16 742.1



DUAL SECURITY

The security of Fiammastor® is also guaranteed by the Dual Security® system. It is a special device to indicate the closure of the front bar to the case by two small plastic flags inside the side end caps.



EXTRA-STRONG ARM

Sturdy reinforced articulated arms with twin cable. Its compact size does not prevent the arms from maintaining a fabric tension up to 32 kg. The awning opens and closes smoothly and silently.



SECURE LOCK

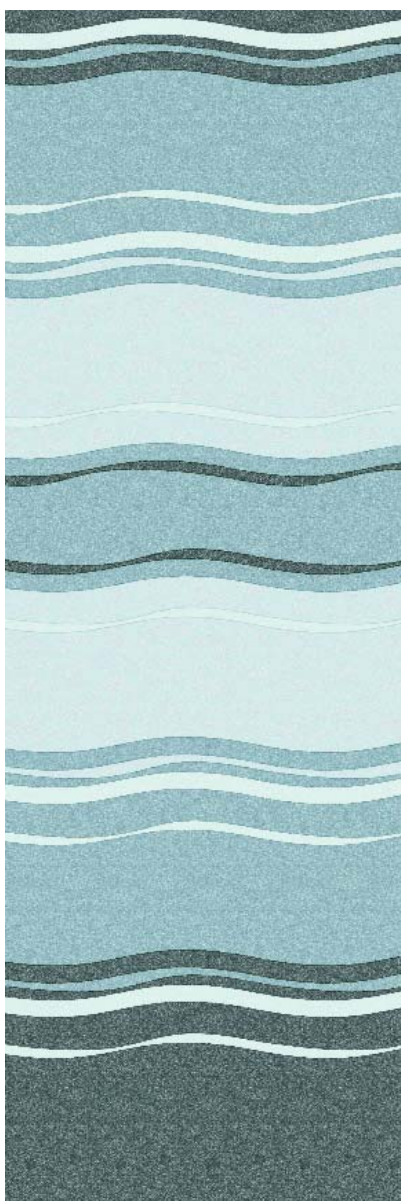
Thanks to the telescopic system of the legs with manual blocking, accidental collapses are avoided.



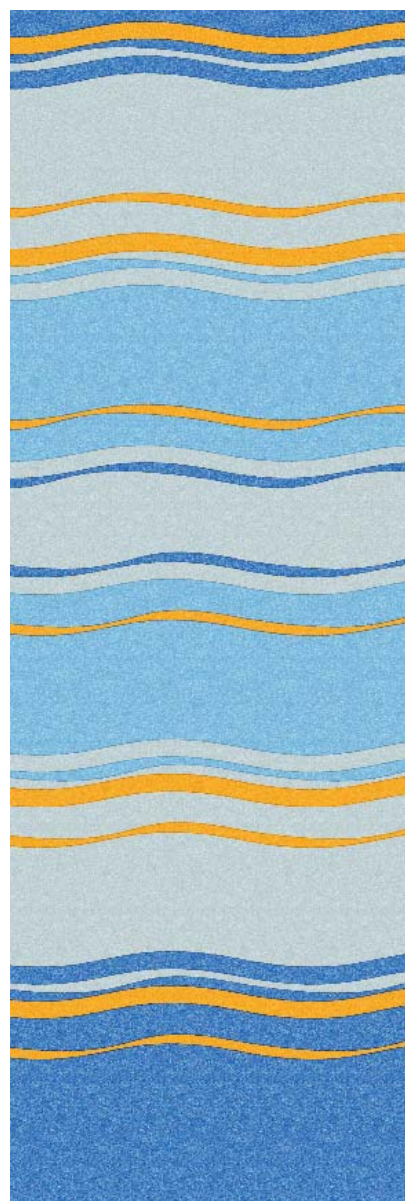
Exclusive new and improved multi-colour, all lengths, in 5 colour print fabrics highly resistant to UV rays




BLUE OCEAN

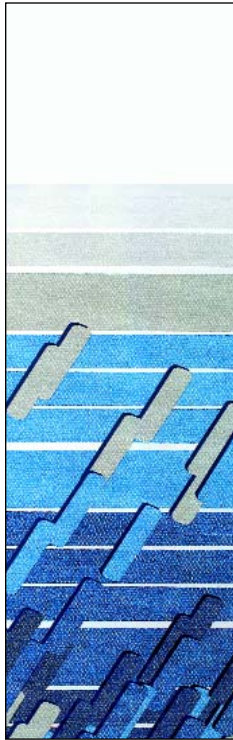
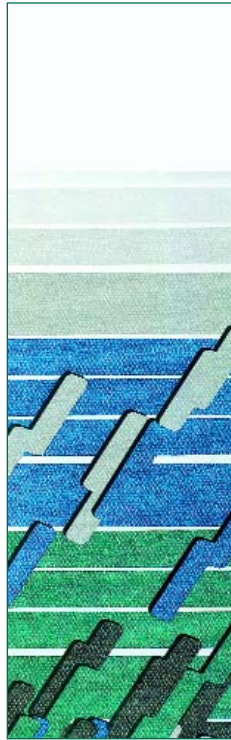


TITANIUM



AZZURRA

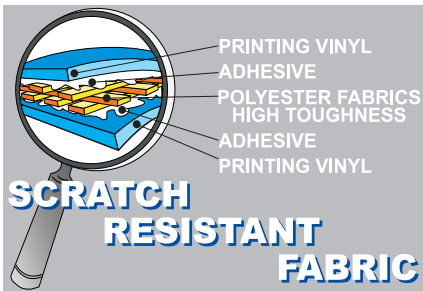
		Blue Ocean N	Titanium T	Azzurra Q	Platinum A	Ocean B	Turquoise L	Sunset C	Silver Kool F
F1Ti - F1 L		●	●	●					
F45i - F45i L		●	●	●	●	●	●	●	
ZIP			●						●
F65 TITANIUM		●	●						
F65				●	●	●			
EAGLE					●				
CARAVANSTORE					●	●			
CARAVANSTORE ZIP					●	●			
F35 PRO				●	●	●			
35 ZIP					●				


PLATINUM

OCEAN

TURQUOISE

SUNSET

**80%
Reflection**
SILVER KOOL
The classic Multicoloured canopies


The Fiammastor® canopy fabric guarantees higher resistance to UV rays. It does not fade, is hermetically sealed by ultrasound and is sewn with the best nautical thread. It is flame-retardant, can be rewound when damp, is light-resistant, rot-proof, waterproof and washable.



All canopies are printed on both sides. The outer layer is hyper-protected to allow a complete and easy deep cleaning.

