

User information

REMI *frontII-D*

Fiat Ducato; Peugeot Boxer; Citroën Jumper
From production year 1994

Driver's cab blind system
for Fiat Ducato driver's cab and identical build vehicles

Important!

**Read this information carefully first.
This system is not suitable for vehicles with
airbags in the A pillars or above the doors!**

Contents:

- A. Product information**
- B. Assembly information**
- C. Operating information**
- D. Repair and maintenance**

A. Product information

1. Manufacturer: REMIS GmbH
Mathias-Brüggen-Str. 67-69
D-50829 Köln
2. Designation and Type: REMI *frontII-D* – Cab blind system, Fiat Ducato
3. Status, Date of manufacture: see sticker
4. Possible uses: Motor caravans based on the FIAT-Ducato II between 1994-2002 and FIAT-Ducato III as from 2002 (vehicles without airbag in the A-pillar or above doors)
5. Installation: see B. (Assembly information)
6. Function description: see C. (Operating information)
7. Variants: 2-part vertical blind system for front windscreen and vertical blind systems in frames for the side windows.

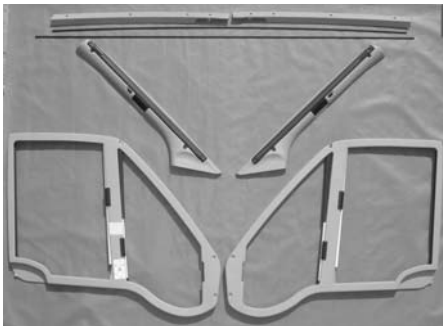
High degree of shade through use of almost completely opaque pleated material.
8. Warning: The blinds may only be closed when the vehicle is stationary and the engine is switched off. Before starting the journey the system must be completely folded down and locked. Note, the handles can remain hot for long periods if exposed to strong sunlight.

The system is not intended for shading the vehicle over long periods (e.g. over the winter). Depending on the temperature, the material may be temporarily more difficult to fold back.

B. Assembly information

We recommend that the blind system is installed by a specialist workshop !
 No liability or warranty is accepted in cases of incorrect assembly or installation.

Step 1: (Check scope of delivery)

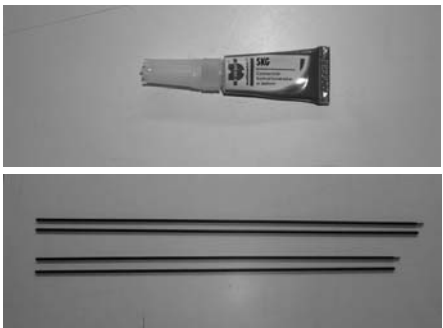


B1:
 Front system:
 A-pillar cover
 left/right
 Guide tube top
 (1515mm) & bottom
 (1585mm)
 Top cover, left &
 right
 Side system:
 Driver's side
 Passenger side



B2:
 Front blind:
 2 short tube carriers
 6 rawlplugs
 2 screws SK3,0x16
 4 screws SK4,2x13
 2 screws LIK4,2x13
 2 screws LIK4,2x25
 Side blind: 12 screws
 3,5x19

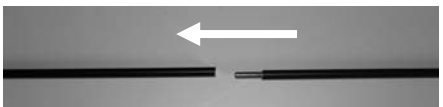
Step 2: (Assemble guide tubes, only for aftermarket version!)



B3-B4:
 If the top and
 bottom guide tubes
 are delivered
 separately, they
 must be joined with
 the adhesive
 supplied with the kit.



B5:
 The adhesive is
 applied into the
 guide tube at the
 end without the
 thread. Use
 sufficient to fill the
 front part of the
 opening generously.



B6:
 The guide tube with pin is now pushed rapidly into the other tube. Allow the joined tubes to harden for 10-15 minutes!

Important: Always link pairs of the same length!

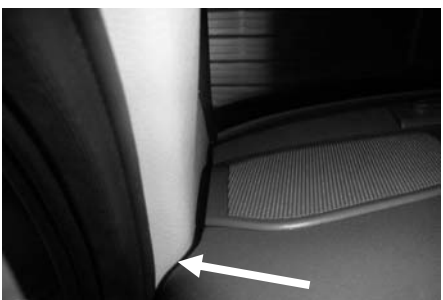
Step 3: (Mount front system)



B7:
 Remove door seal
 from area of the left
 A-pillar cover.
 (Same for passenger
 side).



B8:
 Remove the three
 screws from the A-
 pillar cover (Phillips
 screws).
 (Same for passenger
 side).



B9:
 Place a piece of
 cardboard in the
 space marked in
 order to protect the
 instrument panel.
 (Same for passenger
 side).



B10:
 Pull out the loose A-
 pillar cover with a
 sharp backwards
 movement. The
 narrow projection
 breaks at a defined
 point underneath the
 instrument panel.
 (Same for passenger
 side)

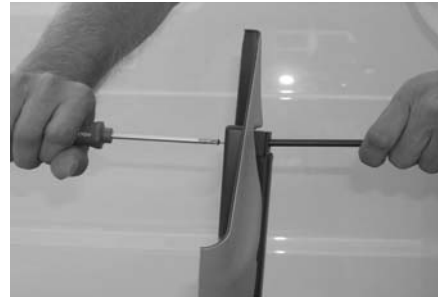
Step 4: (Preliminary assembly, front system)



B11:
Screw on the plug side of the guide tube at the top (short tube) to the cassette at the right top with a screw SK3.0x16 (do not screw tightly, tube must still be capable of rotation).



B12:
Push the tube carrier as shown to the centre onto the top guide tube.
B13:
Screw the guide tube at the top with the thread on the cassette, left (do not tighten).



B14:
Screw the plug side of the lower guide tube (long tube) onto the cassette at the bottom right using screws SK3.0x16 (do not tighten, tube must be capable of rotation).



B15 - B16:
Push the tube carrier up to the middle onto the lower guide tube as shown.
Screw the guide tube at the bottom with the thread on the cassette, left (do not tighten).

Step 5: (Mount front system)



B17:
Place the front system on the A-column in a suitable way as shown (Same for passenger side).



B18:
Screw on cassette at top left with screw LIK4.2x25 (Same for right cassette).



B19:
Screw on the cassette bottom left with screw LIK4.2x13. (Same for right cassette). Then press rubber door seal on again at both sides.



B20:
Join the right and left parts of the top cover and place on the roof as shown, so that their sides lie against the cassettes.



B21 & B22:
Drill through the fixing holes in the cover into the roof using a Ø6mm drill bit. Screw the cover onto the roof using the rawlplugs.



B23:
Close the pleated material to find the position for the top tube carrier. The cutout of the handle fits round the foot of the mirror. Correct length of guide tubes by rotating them if necessary.



B24:
Fix the tube carrier onto the top cover from below, using adhesive tape. Pull off the cover strips



B25:
Open blind and take mirror out of holder from above.



B26:
Screw on tube carrier with 2 screws SK 4.2x13.
Then push mirror back onto holder.



B27:
Close blind to find position for lower tube carrier.
Fix holder in this position using adhesive tape.



B28:
Screw tube carrier onto the instrument panel with 2 screws SK 4.2x13.

Step 4: (Mount side system)



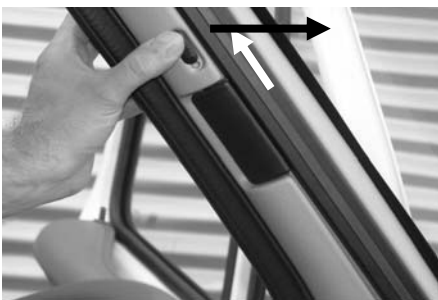
B29:
Place the side system in the door frame and press on.



B30:
Screw on side system using 6 self-tapping screws LIK 3.5x19 (Torx T10)

C. Operating information

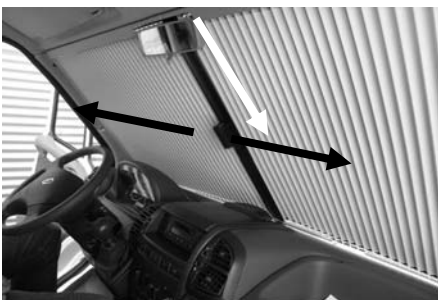
Front system:



C1:
Push button up in order to unlock front blind.



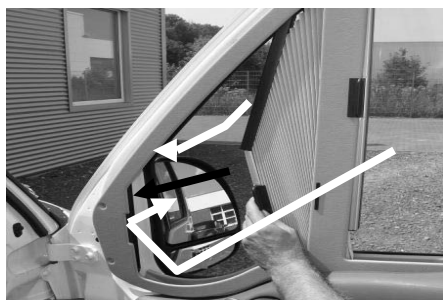
C2:
Pull handle from left to right into the middle of the windscreen. Handles close with magnetic catch.



C3:
To open, pull handles apart in the direction of the arrows and return to rest position in the A-pillars.



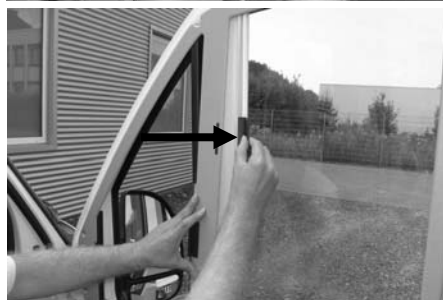
Lock front system by pulling down slider (on both sides). **Make sure the system is correctly locked in position during driving!**

Side system:

C5:
To open:
 Release handle from rest position by tilting and pulling lightly.
To close:
 Latch in handle by pressing onto frame.



C5:
 Bring handle up to stop rail, magnetic catch locks automatically.



C7:
Top open:
 Release handle from rest position by tilting and pulling lightly.
To close:
 Latch in handle by pressing onto frame.



C8:
 Bring handle up to stop rail, magnetic catch locks automatically.

D. Repair and maintenance

1. Care: Do not use aggressive cleaners (solvents and abrasives). Clean the frame of the front and side system with a damp cloth and mild soap solution.
Clean pleated material with a soft brush or a damp cloth.
2. Maintenance/repair: The system is designed to be maintenance-free.
3. Where to keep the documents: The user information with the operating and assembly instructions should be kept in the vehicle if possible so that they are at hand when needed.
4. Spare parts: Spare parts are available from your specialist dealer.

Information kindly supplied by Remis
 File converted to small PDF for easy
 download by motorcaravanning.co.uk