

## User information

### REMI *frontII-M*

Renault Master; Opel Movano; Nissan Interstar  
From production year 2003

Driver's cab blind system  
for Renault Master and identical build vehicles

#### **Important!**

**Read this information carefully first.  
This system is not suitable for vehicles with  
airbags in the A pillars or above the doors!**

#### Contents:

- A. Product information**
- B. Assembly information**
- C. Operating information**
- D. Repair and maintenance**

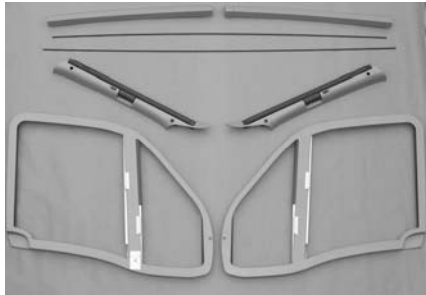
### **A. Product information**

1. Manufacturer: REMIS GmbH  
Mathias-Brüggen-Str. 67-69  
D-50829 Köln
2. Designation and Type: REMI *frontII-M* – Cab blind system, Renault Master
3. Status, Date of manufacture: see sticker
4. Possible uses: Motor caravans based on the Renault Master as from 2003 and identical build vehicles, Opel Movano, Nissan Interstar (vehicles without airbag in the A-pillar or above doors)
5. Installation: see B. (Assembly information)
6. Function description: see C. (Operating information)
7. Variants: 2-part vertical blind system for front windscreen and vertical blind systems in frames for the side windows.  
  
High degree of shade through use of almost completely opaque pleated material.
8. Warning: The blinds may only be closed when the vehicle is stationary and the engine is switched off. Before starting the journey, the system must be completely folded down and locked. Note: the handles can remain hot for long periods if exposed to strong sunlight.  
  
The system is not intended for shading the vehicle over long periods (e.g. over the winter). Depending on the temperature, the material may be temporarily more difficult to fold back.

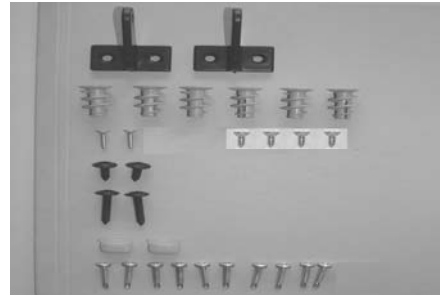
## B. Assembly information

We recommend that the blind system is installed by a specialist workshop !  
 No liability or warranty is accepted in cases of incorrect assembly or installation.

### Step 1: (Check scope of delivery)

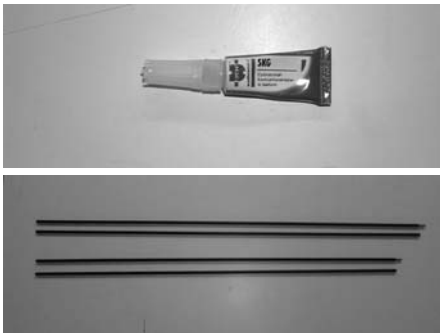


B1:  
 Front system:  
 Front system:  
 A-pillar cover  
 left/right  
 Guide tube top  
 (1515mm) & bottom  
 (1585mm)  
 Top cover, left &  
 right  
 Side system:  
 Driver, passenger  
 side



B2:  
 Front blind:  
 2 short tube carriers  
 6 rawlplugs  
 2 screws SK3,0x16  
 4 screws SK4,2x13  
 2 screws LIK4,2x13  
 2 screws LIK4,2x25  
 2 Coachwork plugs  
 Side blind:  
 12 screws, 3.5x19

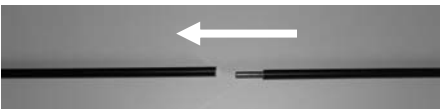
### Step 2: (Assemble guide tubes, only for aftermarket version!)



B3-B4:  
 If the top and  
 bottom guide tubes  
 are delivered  
 separately, they  
 must be joined with  
 the adhesive  
 supplied with the kit.



B5:  
 The adhesive is  
 applied into the  
 guide tube at the  
 end without the  
 thread. Use  
 sufficient to fill the  
 front part of the  
 opening generously.



B6:  
 The guide tube with pin is now pushed rapidly into the other tube. Allow the joined  
 tubes to harden for 10-15 minutes!  
**Important: Always link pairs of the same length!**

### Step 3: (Mount front system)



B7:  
 Remove door seal  
 from area of the left  
 A-pillar cover.  
 (Same for passenger  
 side).



B8:  
 Remove the screws  
 from the A-pillar  
 cover (Torx T20).  
 B9:  
 Remove cover from  
 A-pillar from the  
 top.  
 (Same for passenger  
 side)



B10:  
 Remove cover  
 completely.  
 The clip connections  
 towards the bottom  
 release  
 automatically when  
 pulled. (Same for  
 passenger side).



B11 & B12:  
 Press bodywork  
 plugs into the metal  
 of the A-pillar in the  
 position shown,  
 (Same for passenger  
 side).

**Step 4: (Preliminary mounting, front system)**



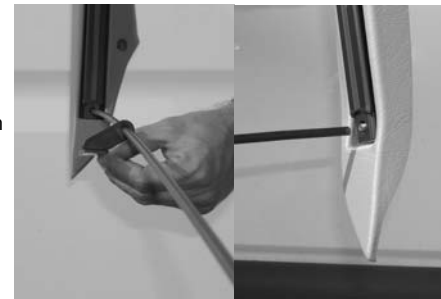
**B13:**  
Screw the plug side of the top guide tube (short) to the top right of the cassette with screw SK3.0x16 (do not screw tightly, tube must be capable of rotation).



**B14 / B15:**  
Push the tube carrier as shown to the centre onto the top guide tube.  
Screw in the guide tube with thread side to the cassette on left (do not tighten).



**B16:**  
Screw the plug side of the lower guide tube (long tube) to the cassette, bottom right with screws SK3,0x16 (do not screw tightly, tube must be capable of rotation).



**B17 - B18:**  
Push the tube carrier as shown to the centre onto the bottom guide tube.  
Screw in the guide tube with thread side to the cassette on left right?? (do not tighten).

**Step 5: (Mount front system)**



**B19:**  
Press the front system onto the A-pillar in the position shown and press on rubber seal again. (Same for passenger side).



**B20:**  
Screw on cassette at top left with Screw LIK4,2x25 and at the bottom with Screw LIK4.2x13 (Same for right cassette).



**B21:**  
Position of cover on roof top left and bore through the holes with drill bit Ø6mm (Same for right side).



**B22:**  
Screw cover top right and left to roof with 6 screwed inserts.



**B23:**  
Close the pleated material to find the position for the top tube carrier. The cutout of the handle fits round the foot of the mirror. Correct length of guide tubes by rotating them if necessary.



**B24:**  
Fix the tube carrier onto the top cover from below, using adhesive tape. Pull off the cover strips.



**B23:**  
Close the pleated material to find the position for the top tube carrier. The cutout of the handle fits round the foot of the mirror. Correct length of guide tubes by rotating them if necessary.



**B24:**  
Fix the tube carrier onto the top cover from below, using adhesive tape. Pull off the cover strips.



B25:  
Open blind and take mirror out of holder from above.



B26:  
Screw on tube carrier with 2 screws SK 4.2x13.  
Then push mirror back onto holder.



B27:  
Close blind to find position for lower tube carrier.  
Fix holder in this position using adhesive tape.



B28:  
Screw tube carrier onto the instrument panel with 2 screws SK 4.2x13.

**Step 4: (Mount side system)**



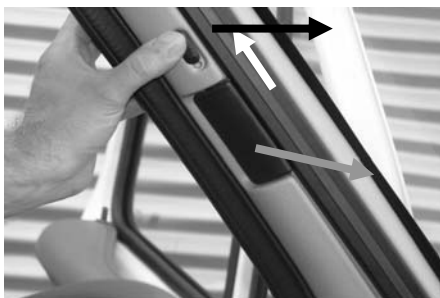
B29:  
Place the side system in the door frame and press on.



B30:  
Screw on side system using 6 self-tapping screws LIK 3.5x19 (Torx T10)

**C. Operating information**

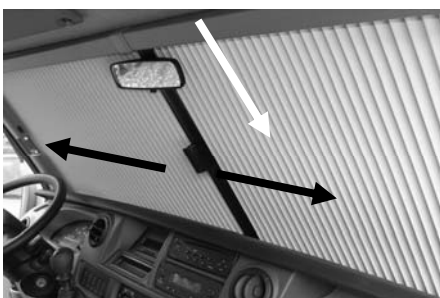
**Front system:**



C1:  
Push button up in order to unlock front blind.



C2:  
Pull handle from left to right into the middle of the windscreen. Handles close with magnetic catch.



C3:  
To open, pull handles apart in the direction of the arrows and return to rest position in the A-pillars.



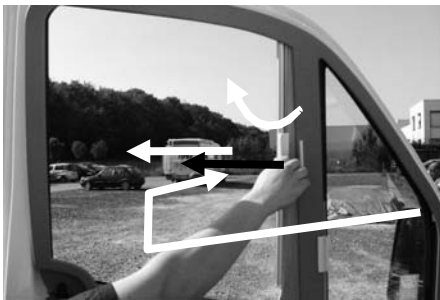
C4:  
Lock front system by pulling down slider (on both sides). **Make sure the system is correctly locked in position during driving!**

**Side system:**

**C5:**  
**To open:**  
 Release handle from rest position by tilting and pulling lightly.  
**To close:**  
 Latch in handle by pressing onto frame.



**C6:**  
 Bring handle up to stop rail, magnetic catch locks automatically.



**C7:**  
**To open:**  
 Release handle from rest position by tilting and pulling lightly.  
**To close:**  
 Latch in handle by pressing onto frame.



**C8:**  
 Bring handle up to stop rail, magnetic catch locks automatically.

**D. Repair and maintenance****E. Repair and maintenance**

1. Care: Do not use aggressive cleaners (solvents and abrasives). Clean the frame of the front and side system with a damp cloth and mild soap solution.  
Clean pleated material with a soft brush or a damp cloth.
2. Maintenance/repair: The system is designed to be maintenance-free.
3. Where to keep the documents: The user information with the operating and assembly instructions should be kept in the vehicle if possible so that they are at hand when needed.
4. Spare parts: Spare parts are available from your specialist dealer.

Information kindly supplied by Remis  
 File converted to small PDF for easy  
 download by motorcaravanning.co.uk