

# User information

## REMI *frontII-S*

Mercedes Sprinter  
From production year 2000

Driver's cab blind system  
for Mercedes Sprinter

### **Important!**

**Read this information carefully first.  
This system is not suitable for vehicles with  
airbags in the A pillars or above the doors!**

### Contents:

- A. Product information**
- B. Assembly information**
- C. Operating information**
- D. Repair and maintenance**

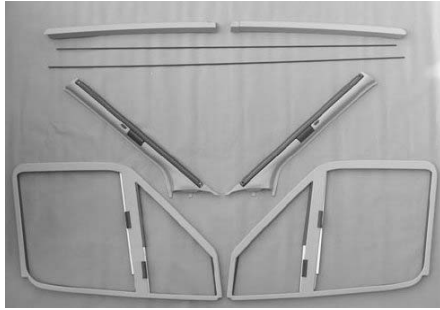
### **A. Product information**

1. Manufacturer: REMIS GmbH  
Mathias-Brüggen-Str. 67-69  
D-50829 Köln
2. Designation and Type: REMIfrontII-S – Cab blind system, Mercedes Sprinter
3. Status, Date of manufacture: see sticker
4. Possible uses: Motor caravans based on the Mercedes Sprinter as from 2000 (vehicles without airbags above the a pillar or above the doors)
5. Installation: see B. (Assembly information)
6. Function description: see C. (Operating information)
7. Variants: 2-part vertical blind system for front windscreen and vertical blind systems in frames for the side windows.  
  
High degree of shade through use of almost completely opaque pleated material.
8. Warning: The blinds may only be closed when the vehicle is stationary and the engine is switched off. Before starting the journey the system must be completely folded down and locked. Note, the handles can remain hot for long periods if exposed to strong sunlight.  
  
The system is not intended for shading the vehicle over long periods (e.g. over the winter). Depending on the temperature, the material may be temporarily more difficult to fold back.

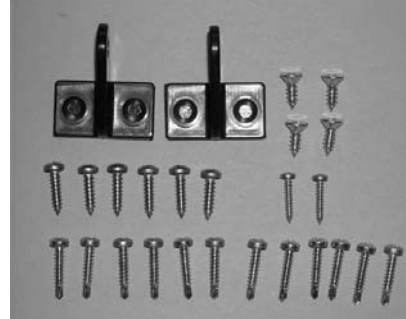
### C. Assembly information

We recommend that the blind system is installed by a specialist workshop !  
 No liability or warranty is accepted in cases of incorrect assembly or installation.

#### Step 1: (Check scope of delivery)

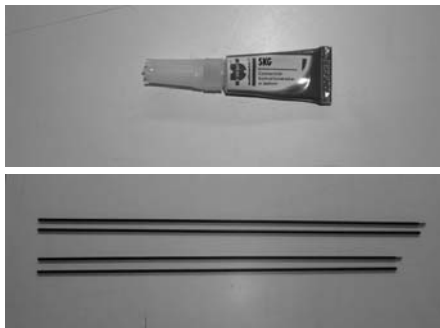


- B1:**  
 1 Front system  
 - Cover  
 - A-pillar left/right  
 - Guide tubes top (1515mm) & bottom (1585mm)  
 - Top cover, left and right  
 2 Side system  
 - driver's side  
 - passenger side



- B2:**  
 Front blind  
 - 2 tube carriers  
 - 4 screws 4.2x13  
 - 6 screws 3.9x16  
 - 2 screws 2.9x16  
 Side blind  
 - 12 screws 3.5x19

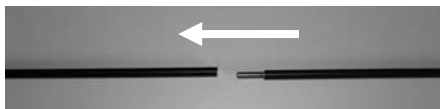
#### Step 2: (Assemble guide tubes, for trade only!)



**B3-B4:**  
 If the top and bottom guide tubes are delivered separately, they must be joined with the adhesive supplied with the kit.



**B5:**  
 The adhesive is applied into the guide tube at the end without the thread. Use sufficient to fill the front part of the opening generously.



**B6:**  
 The guide tube with pin is now pushed rapidly into the other tube. Allow the joined tubes to harden for 10-15 minutes!

**Important: Always link pairs of the same length!**

#### Step 3: (Mount front system)



**B7:**  
 Remove door seal from area of the left A-pillar cover.



**B8:**  
 Push fingers between A-pillar and roof covering and pull out of the metal.



**B9:**  
 The A-pillar cover can now be lifted off upwards.



**B10:**  
 For ease of assembly, a pieces should be cut out of the roof covering, as shown.



**B11:**  
 The bottom lug of the "left A-pillar cover" is fed into the bottom opening of the metal.



**B12-13:**  
 Press the bracket on the cover into the top opening of the metal.



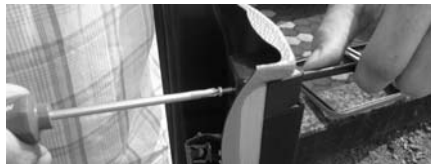
**B14:**  
Press the cover on firmly. If it does not sit correctly, pull off again and either cut off more of the roof covering or push the cables which run behind somewhat to the side.



**B15:**  
Press the rubber door seal on again.



**B16:**  
To make the next steps easier, remove the mirror. The mirror must be pulled out upwards.



**B17:**  
Screw top guide tube (plug) onto the right A-pillar cover.  
(1x screw 2.9x16)



**B18**  
Screw top guide tube (plug) onto the right A-pillar cover.  
(1x screw 2.9x16)



**B19:**  
Push tube carrier onto top guide tube.



**B20:**  
Push tube carrier onto bottom guide tube.



**B21:**  
Mount the right A-pillar cover just like the left cover (B7-14).



**B22:**  
Screw the bottom guide tube into the thread of the left A pillar cover.



**B23:**  
Repeat process for top guide tube.



**B24-25:**  
Lay right section of top cover with the contour against the A-pillar cover and screw on.  
(3x screws 3.9x16)



**B26-27:**  
Push left section of cover into the right cover and lay with the contour against the A-pillar cover and screw on (3x screws 3.9x16).



**B28:**  
Stick on the tube carrier in the cover in line with the mirror carrier.



**B29:**  
Screw tube carrier tight.  
(2x screws 4.2x13)



**B30:**  
Pull together front blind in order to position tube carrier in centre.



**B31:**  
Straighten tube carrier and stick on.



**B32:**  
Screw tube carrier fast.  
(2x screws 4.2x13)



**B33:**  
Re-hang mirror.

**Step 4: (Mount the side system)**



B34: Insert frame and press against door.



B35: Screw on frame. (6x screws 3.5x19).

**D. Operating information**

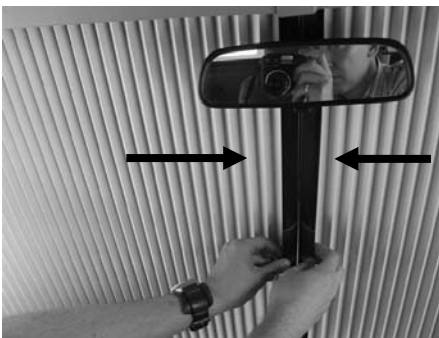
**Front system:**



C1: Push button up to unlock front blind.

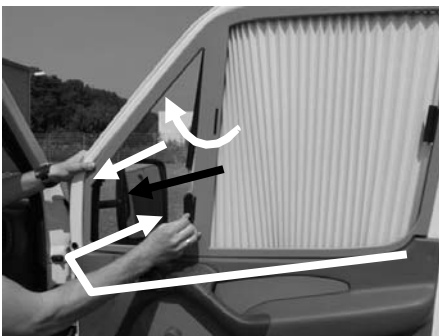


C2: Pull handles from left and right towards the middle of the windscreen.



C3: Bring handles together in the middle, magnetic catch locks blinds automatically.

**Side system:**

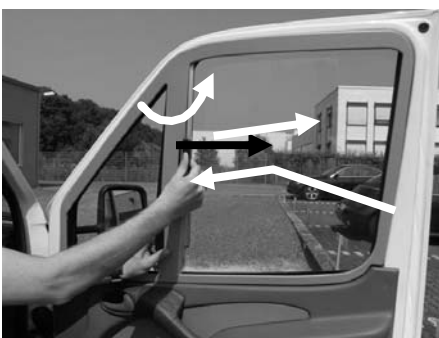


C4: To open: Release handle from rest position by tilting and pulling lightly.

To close: Latch in handle by pressing onto frame.



C5: Bring handle up to stop rail, magnetic catch locks automatically.



C6: To open: Release handle from rest position by tilting and pulling lightly.

To close: Latch in handle by pressing onto frame.



C7: Bring handle up to stop rail, magnetic catch locks automatically.

## E. Repair and maintenance

1. Care: Do not use aggressive cleaners (solvents and abrasives). Clean the frame of the front and side system with a damp cloth and mild soap solution.  
Clean pleated material with a soft brush or a damp cloth.
2. Maintenance/repair: The system is designed to be maintenance-free.
3. Where to keep the documents: The user information with the operating and assembly instructions should be kept in the vehicle if possible so that they are at hand when needed.
4. Spare parts: Spare parts are available from your specialist dealer.