

User information

REMI *frontIII-T*

Ford Transit
From production year 2006

Driver's cab blind system
for Ford Transit

Important!

Read this information carefully first. This system is not suitable for vehicles with airbags in the A pillars or above the doors or for vehicles with a rain sensor in the rear view mirror!

Contents:

- A. Product information**
- B. Assembly information**
- C. Operating information**
- D. Repair and maintenance**

A. Product information

1. Manufacturer: REMIS GmbH
Mathias-Brüggen-Str. 67-69
D-50829 Köln
2. Designation and Type: REMI *frontIII-M* – Cab blind system, Ford Transit
3. Status, Date of manufacture: see sticker
4. Possible uses: Motor caravans based on the Ford Transit as from 2006
(vehicles without airbag in the A-pillar or above doors **or rain sensor**)
5. Installation: see B. (Assembly information)
6. Function description: see C. (Operating information)
7. Variants: 2-part vertical blind system for front windscreen and vertical blind systems in frames for the side windows.

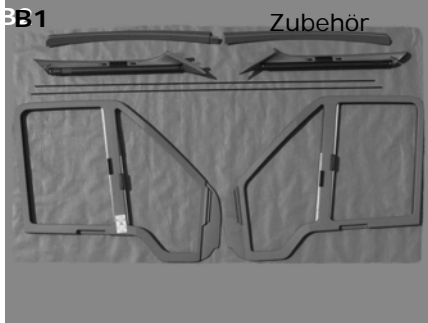
High degree of shade through use of almost completely opaque pleated material.
8. Warning: The blinds may only be closed when the vehicle is stationary and the engine is switched off. Before starting the journey, the system must be completely folded down and locked. Note: the handles can remain hot for long periods if exposed to strong sunlight.

The system is not intended for shading the vehicle over long periods (e.g. over the winter). Depending on the temperature, the material may be temporarily more difficult to fold back.

C. Assembly B.

We recommend that the blind system is installed by a specialist workshop !
 No liability or warranty is accepted in cases of incorrect assembly or installation.

Step 1: (Check completeness)

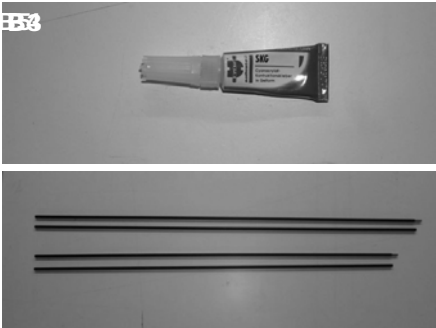


- B1:**
 1 Front system
 - A-pillar cover left and right
 - Guide tubes top (1605mm) & bottom (1658mm)
 - Top cover left/right
 2 Side system
 - Driver's side
 - Passenger side

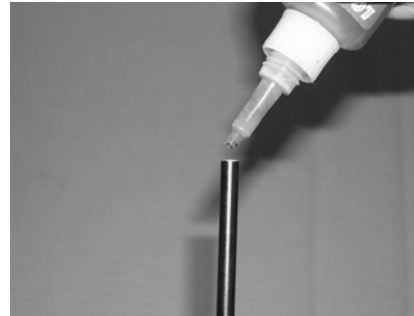


- B2:**
 Front blind
 - 2 tube carriers (long, short)
 - 4 Screws 4.2x13
 - 6 Screws 3.9x16
 - 2 Screws 2.9x16
 - 6 threaded plugs (only for public trade version)
 Side blinds
 - 12 screws 3.5x19

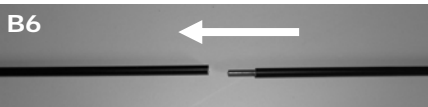
Step 2: (Mount guide tubes, only needed for aftermarket version!)



B3-B4:
 If the top and bottom guide tubes are supplied separately, they must be joined with the adhesive supplied in the kit.



B5:
 Guide tube with thread: apply adhesive at the non-threaded end. Make sure that the front part of the opening is well filled.



B6:
 Now quickly push the guide tube with pin into the other tube. Allow the joined tubes to harden off for 10-15 minutes.

Important: Always link pairs of the same length!

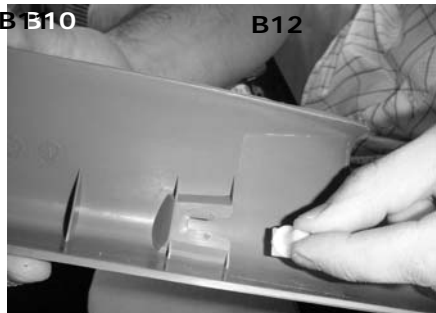
Step 3: (Mount front system)



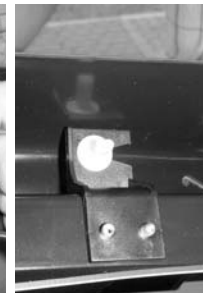
B7:
 Remove door seals from area of the left A-pillar covers.



B8:
 Pull off cover from the A-pillar from the top. The clips release automatically if pulled.
B9:
 Remove cover from the top.



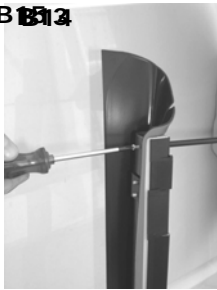
B10:
 Pull out clips from original cover.



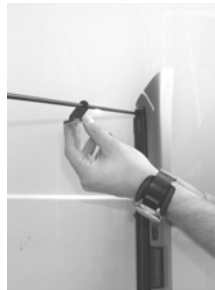
B11 & B12:
 Place clips in the REMIS cover.

REMI frontIII-T User information

B13



B13:
Screw the plug side of the top guide tube (short) to the top of the right cover (Screw 2.9x16)
The tube must be capable of rotation i.e. do not tighten screw too far.

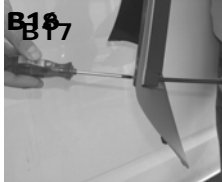


B14:
Push the tube carrier (long) onto the top guide tube to the centre.



B15:
Screw the top guide tube (short) to the top of the left cover (up to around the half of the threaded bolt).

B16



B16:
Screw the plug side of the lower guide tube (long) to the bottom of the right cover (Screw 2.9x16). Tube must still be rotatable (i.e. do not tighten)

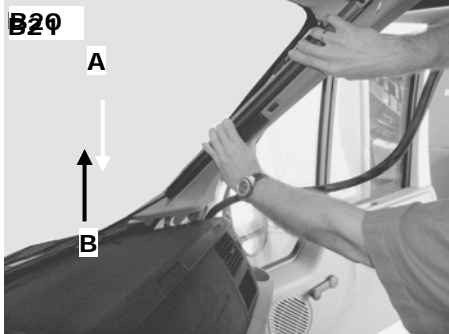


B17:
Push the tube carrier (short) as shown to the centre onto the bottom guide tube.



B18:
Push the lower guide tube (long) with thread side to the bottom of the left cover (to about half of the threaded bolt)

B20



B19:
Insert the A-pillar as shown.
Insert the lower end into the recess of the instrument panel and then press the cover onto the A-pillar.



B20+21:
Clip A latches into holder B on the A-pillar of the vehicle.

Please check if cables hinder assembly. If necessary, push carefully to one side.

B23



B22:
Then press the rubber profile on again.



B23+24:
To mount the top covers, pull off the cover strips from the adhesive strips on the ends of the covers and in the area of the overlap.

B24



B25:
Place the right and left covers into the slits of the A-pillar covers and position on the roofliner.

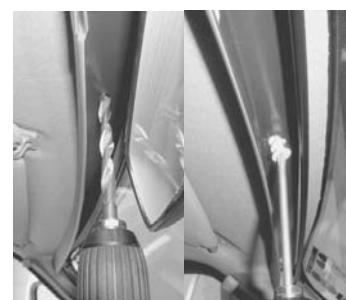


B26+27:
Ensure correct positioning and visually good finish of the covers on the ends in the overlap area.

B25
B26
B27



B28:
Vehicles with plastic roofliner:
Screw covers with 6 screws 3.9x16 onto the roofliner. Distribute screws evenly over the length.



B29+30:
Vehicles with felt roof:
Bore through screw holes with drill $\varnothing 6$ into the roofliner (Fig. 29) and then screw on covers with 6 threaded plugs (Fig. 30).

B29



B30



B32



B31:
Close the pleated material to find the position for the top tube carrier. The cutout of the handle fits round the foot of the mirror. (Behind the mirror in the picture).



B32:
Fix the upper tube carrier in the position found under B31 centrally to the mirror (double adhesive strip) and screw to the top cover with 2 screws 4.2x13.

B33

B33:
The guide tubes can be readjusted for length if necessary by means of rotation in order to ensure perfect function.



B34:
Close the blind to assembly the lower tube carrier and fix the carrier in this position in the middle of the instrument panel (double adhesive strip).
After this, screw the carrier fast with 2 screws 4.2x13

Step 4: (Mounting the side system)



B36

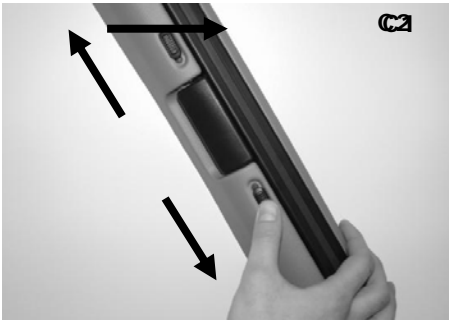
B35:
Set the side system in the window frame and hold in this position.



B36:
Screw the side system in the inner edge of the frame with 6 self-tapping screws 3.5x19 (Torx T15) in the holes provided. (Do the same on the passenger side)

D. Operating information

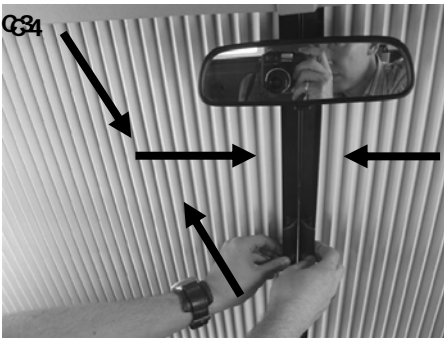
Front system:



C1:
Push both buttons in the direction of the arrows to unlock the front blind. **Two red signal points become visible. Do not drive the vehicle when blind is in this position!**



C2:
Pull handle from left to right into the middle of the windscreen.

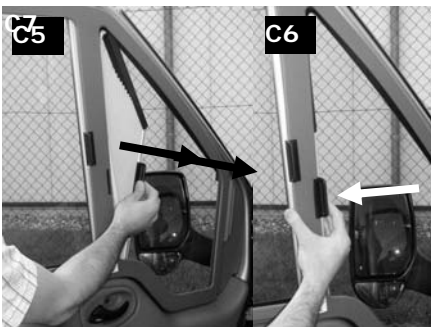


C3:
Bring handles together in the middle, magnetic catch locks automatically.



C4:
To lock, operate both buttons in the direction of the arrows. **Make sure the system is correctly locked in position on both sides during driving!**

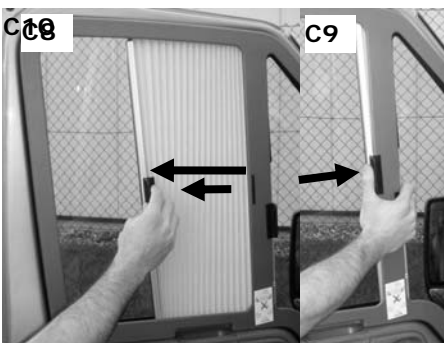
Side system:



C5:
To open:
Release handle from rest position by tilting and pulling lightly.
C6:
To close:
Latch in handle by pressing onto frame.



C7:
Bring handle up to stop rail, magnetic catch locks automatically.



C8:
To open:
Release handle from rest position by tilting and pulling lightly.
C9:
To close:
Latch in handle by pressing onto frame.



C10:
Bring handle up to stop rail, magnetic catch locks automatically.

E. Repair and maintenance

1. Care: Do not use aggressive cleaners (solvents and abrasives). Clean the frame of the front and side system with a damp cloth and mild soap solution.
Clean pleated material with a soft brush or a damp cloth.
2. Maintenance/repair: The system is designed to be maintenance-free.
3. Where to keep the documents: The user information with the operating and assembly instructions should be kept in the vehicle if possible so that they are at hand when needed.
4. Spare parts: Spare parts are available from your specialist dealer.